

What is SPN 21?

SPN 21 is the acronym for Sistem Pendidikan Negara Abad Ke-21, The National Education System for the 21st Century which has been approved by the Ministry of Education. This system makes provision for several major educational changes.

When it is implemented?

In stages:

- Interim (transitional) stage in 2008 for Year 7 [PSR 2007 cohort]
- At the primary level, it will be implemented in 2009 for Year 1 and Year 4
- Full implementation at primary level in 2011

Why the education system needs to be changed?

SPN 21 aims to:

- meet the social and economic challenges of the 21st Century
- realise the Ministry of Education's vision and mission
- equip students with 21st Century skills
- fulfill the Strategic Themes as outlined in the Ministry of Education's Strategic Plan (2007-2011)

Rationale for change:

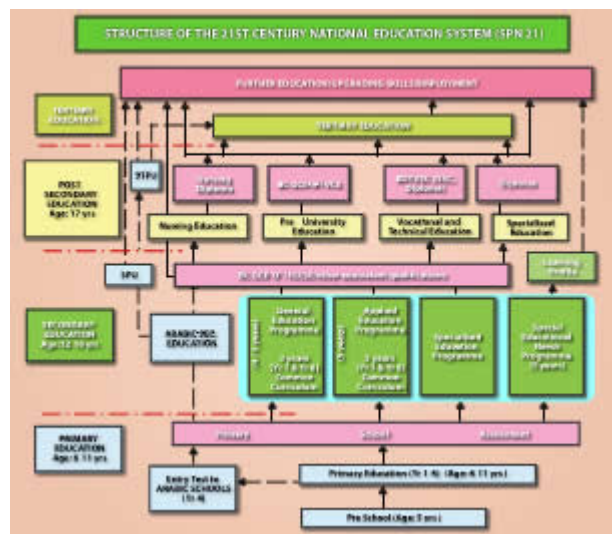
- Brunei Vision 2035
 - By 2035, Brunei Darussalam is recognised everywhere for:
 - The accomplishment of its well-educated and highly skilled people
 - The quality of life
 - The dynamic and sustainable economy
- 8 policy directions in the Education Strategy, Brunei Vision 2035
- Fulfillment of the Ministry of Education's mission 'Provide Holistic Education To Achieve Fullest Potential For All'
- Comparison with Education Systems and Curricula of various countries
- Raising students' achievement in the 3 core subjects: English Language, Mathematics and Science
- Increasing the percentage of students' enrollment into higher education from 14% to 30% by 2011
- Strengthen proficiency in Bahasa Melayu
- Local researchers and consultants from overseas have identified certain aspects of the National Education System that need to be improved

What are the benefits of SPN 21?

- Greater emphasis on 'character building'
- No retention from Year 1 to Year 10/11 (except for those with less than 85% attendance)
- Multiple pathways to higher education
- Multiple choices of educational programmes based on students' interests, needs and abilities
- Opportunities to pursue 4-year or 5-year programmes before sitting for the Brunei-Cambridge General Certificate of Education 'O' Level examination
- Continuous and seamless curriculum from Years 7-10/11

- Acquisition of basic technical, vocational and business skills that is useful for self-employment and other career opportunities
- Opportunities for technical and vocational education in higher institutions
- Special Educational Needs Programme for students with special needs
- Specialised Education Programme for the gifted and talented
- Opportunities for acquisition of valuable and marketable skills
- Improvement in students' achievement
- Improvement in national standards with benchmarking against international standards
- Improvement in teaching and learning standards

1. Education System Structure



What are the differences between the Current Education System and SPN 21?

a. Differences in Class Labels and Assessment/Public Examinations

EXPECTED AGE FOR EVERY SCHOOL LEVEL	CURRENT SYSTEM	SPN 21			
3 Years Old	Pre-School	Pre-School			
6-11 Years Old	Primary 1-6 <i>Penilaian Sekolah Rendah (PSR)</i>	Year 1-6 <i>Penilaian Sekolah Rendah (PSR)</i>			
12-16 Years Old	Form 1	Year 7	4 Y E A R 7 8 9 10 11	Year 7	5 Y E A R 8 9 10 11
	Form 2	Year 8 <i>Student Progress Assessment</i>		Year 8 <i>Student Progress Assessment</i>	
	Form 3 ^a <i>Penilaian Menengah Rendah (PMR)</i>	Year 9		Year 9	
	Form 4	Year 10 ^b <i>BC GCE 'O' Level Examination</i>		Year 10	
	Form 5			Year 11 <i>BC GCE 'O' Level Examination</i>	

^a In the current system, students may have to leave the mainstream school system after Form 3 as the exit point and apply to technical and vocational institutions or seek employment

^b In SPN 21, students are expected to proceed to Year 10 (6-year programme) or Year 11 (5-year programme), then only they may apply to technical and vocational institutions or seek employment

b. Differences in the Schooling Duration



In the current system, all students pursue 5 years of secondary education (3 years in lower secondary and 2 years in upper secondary) before sitting for the BC GCE 'O' Level examination.

In SPN 21

- at the secondary level, students will complete the 4-year programme or 5-year programme, before they sit for the BC GCE 'O' Level examination
- all students will follow a common curriculum for two years (Year 7 and 8)
- after Year 8, students will be channelled either to:
 - General Education Programme (Year 9 to 10 or Year 9 Year 9 to Year 11)
 - Applied Education Programme (Year 9 to Year 11)

Other programmes offered in SPN 21 are:

- Specialised Education Programme
This is an education programme for students who are gifted in specific 'academic' fields such as Science and Mathematics, and talented in sports, music, performing arts and fine arts
- Special Educational Needs Programme

Special Educational Needs (SEN) is provided for students who are:

- visually and auditory impaired
- mentally challenged
- physically challenged
- facing specific learning difficulties

Are lateral transfers between the 4-year programme and the 5-year programme allowed?

- Lateral transfers between the 4-year programme and the 5-year programme are allowed, but subject to the students' achievements and specific requirements

2. Curriculum and Evaluation

How is the School Curriculum Organised?

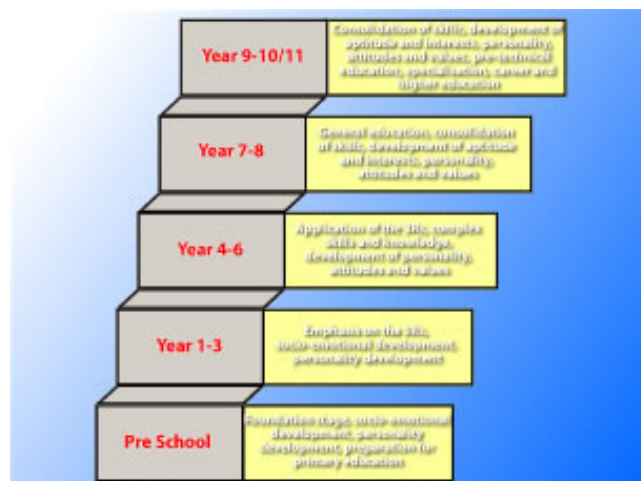
a. Key Features:

- Based on Learning Areas and Learning Outcomes
- Specified 8 Learning Areas:
 - Languages
 - Mathematics
 - Science

- Humanities and Social Sciences
 - Arts and Culture
 - Technology
 - Islamic Religious Knowledge & Malay Islamic Monarchy
 - Health and Physical Education
- Various subject combinations from the 8 Learning Areas
 - Common curriculum at primary level (Year 1 to Year 6) and secondary level (Year 7 to Year 8)
 - Emphasis on essential skills:
 - Communication Skills (reading, writing, listening and speaking)
 - Numeracy Skills
 - Scientific and ICT Skills
 - Problem-Solving Skills (thinking and creativity)
 - Work and Study Skills
 - Self-Management and Competitive Skills (entrepreneurship)
 - Interpersonal Skills
 - Physical Skills
 - Aesthetic Skills
 - Other 21st Century skills in Digital Age Literacy
 - Integration of Core Values and Attitudes:
 - Self-confidence and self-esteem
 - Empathy and appreciativeness
 - Self-reliance and independence
 - Tolerance and mutual respect
 - Caring, concern and sensitivity
 - Integrity
 - Patriotism
 - Piousness
 - Competitiveness
 - Proactive and vigilance

b. Stages in Schooling and Students' Development

What is achieved at each level of Schooling?



What are the subjects offered in SPN 21?

c. Subjects being offered from Year 1 to Year 10/11

1. Year 1 to Year 3

All students are required to learn all compulsory core subjects and compulsory complementary subjects as listed below:

A. COMPULSORY CORE SUBJECTS	B. COMPULSORY COMPLEMENTARY SUBJECTS
Bahasa Melayu	Islamic Religious Knowledge
English Language	Physical Education
Mathematics	Co-curriculum
Science	Fine Arts and Technology <ul style="list-style-type: none"> ○ Module 1: ICT ○ Module 2: Art and Design ○ Module 3: Music and Drama

2. Year 4 to Year 6

All students are required to learn all compulsory core subjects and compulsory complementary subjects as listed below:

A. COMPULSORY CORE SUBJECTS	B. COMPULSORY COMPLEMENTARY SUBJECTS
Bahasa Melayu	Islamic Religious Knowledge
English Language	Physical Education
Mathematics	Co-curriculum
Science	Social Studies Creative Arts and Technology <ul style="list-style-type: none"> ○ Module 1: ICT ○ Module 2 : Art and Design ○ Module 3 : Music and Drama

3. Year 7 to Year 8

All students are required to learn all compulsory core subjects and compulsory complementary subjects as well as one from elective subjects as listed below:

A. COMPULSORY CORE SUBJECTS	B. COMPULSORY COMPLEMENTARY SUBJECTS	C. ELECTIVE SUBJECTS
Bahasa Melayu	Islamic Religious Knowledge	Bahasa Arab
English Language	Malay Islamic Monarchy	French
Mathematics	Physical Education	Mandarin
Science	Co-curriculum	
	Social Studies	
	Business and Technology	
	<ul style="list-style-type: none"> ○ Module 1 : Science and Technology (Design and Technology, Home Economics, Agriculture) ○ Module 2 : ICT ○ Module 3 : Commercial Studies ○ Module 4 : Music & Art 	

4. Year 9 to Year 10/Year 9 to Year 11
(General Education Programme)

All students are required to learn 4 compulsory core subjects, 3 compulsory complementary subjects and at least 2 elective subjects as listed below:

A. COMPULSORY CORE SUBJECTS	TYPE OF ASSESSMENT
Bahasa Melayu	BC GCE 'O' LEVEL
English Language	
Mathematics	
Science*	
Physics / Chemistry / Biology / Combined Science	
B. COMPULSORY COMPLEMENTARY SUBJECTS	TYPE OF ASSESSMENT
Malay Islamic Monarchy	SCHOOL-BASED ASSESSMENT (SBA)
Physical Education	
Co-curriculum	
C. ELECTIVE SUBJECTS	TYPE OF ASSESSMENT
Malay Literature	BC GCE 'O' LEVEL
English Literature	
Bahasa Arab	

French	
Mandarin	
Additional Mathematics	
Physics	
Chemistry	
Biology	
Islamic Religious Knowledge	
Geography	
History	
Economics	
Principles of Accounts	
Art & Craft	
Music	
Design and Technology	
Computer Studies / ICT	
Food and Nutrition	

5. * Choose at least one from Science subjects
6. Year 9 to Year 11
(Applied Education Programme)
All students are required to learn 4 compulsory core subjects, 4 compulsory complementary subjects and at least 2 or more elective subjects as listed below:

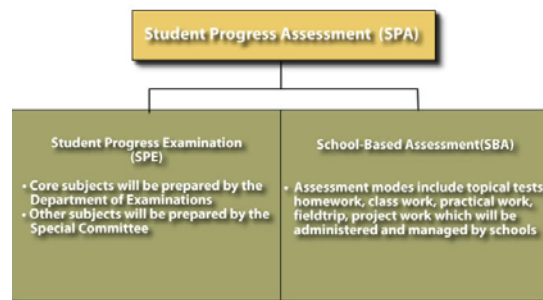
A. COMPULSORY CORE SUBJECTS	TYPE OF ASSESSMENT
Bahasa Melayu	BC GCE 'O' Level
English as A Second Language (E2L)	IGCSE
Mathematics (0580)	IGCSE
Combined Science	BC GCE 'O' Level
B. COMPULSORY COMPLEMENTARY SUBJECTS	TYPE OF ASSESSMENT
Islamic Religious Knowledge	SCHOOL-BASED ASSESSMENT (SBA)
Malay Islamic Monarchy	
Physical Education	
Co-curriculum	
C. ELECTIVE SUBJECTS	TYPE OF ASSESSMENT
Geography	BC GCE 'O' Level
Travel and Tourism	IGCSE
Commercial Studies	BC GCE 'O' Level
Development Studies (0453)	IGCSE
Commerce	BC GCE 'O' Level
Accounting	IGCSE
Food & Nutrition	IGCSE
Business Studies	IGCSE

Art and Design	IGCSE
Art (6010)	BC GCE 'O' Level
Drama	IGCSE
Music	IGCSE
Design and Technology	IGCSE
Computer Studies	BC GCE 'O' Level
Information Technology	IGCSE
Woodwork	IGCSE
Fashion and Fabrics	BC GCE 'O' Level
Agriculture	BC GCE 'O' Level
Physical Education	IGCSE

d. What type of assessment will be used if PMB is phased out?

- Penilaian Menengah Bawah (PMB) will be phased out in 2010 (Resit will take place in January 2010)
- Student Progress Assessment (SPA) will replace Penilaian Menengah Bawah
- SPA consists of 2 components: School-Based Assessment (SBA) and Student Progress Examination (SPE)

Components of Student Progress Assessment (SPA)

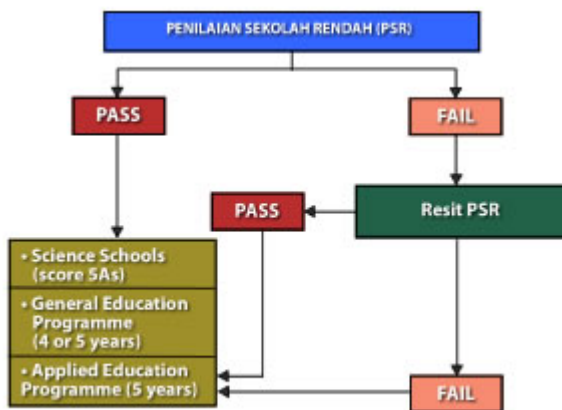


When will SBA be implemented and for what purpose?

- SPA will be implemented continuously throughout Year 7 and Year 8
- SPE will be implemented at the end of Year 8
- SPA will be used to channel students into General Education Programme (4- or 5-year) or into Applied Education Programme (5-year programme)

Will Year 6 students still sit for Penilaian Sekolah Rendah (PSR)?

- Year 6 students will still sit for PSR
- PSR is used to channel students into the Science Schools
- Students who failed PSR will be allowed to resit



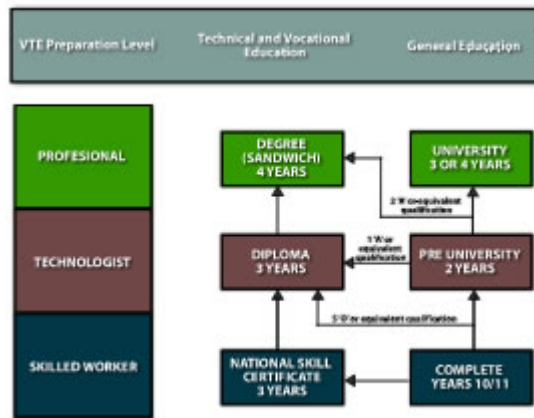
3. Technical Education

What are the changes in Technical Education?

Students from the general education will be given opportunities to acquire the following technical and vocational qualifications:

1. National Skill Certificate (NSC)
This is a 3-year course inclusive of 6 months industrial attachment. This certificate will replace the present National Vocational Certificate (NVC)/National Trade Certificate 3 (NTC3) and National Trade Certificate 2 (NTC2). The minimum entry requirement is the completion of Year 10 or Year 11. NSC is equivalent to the National Diploma (ND).
2. Diploma
This is a 3-year course inclusive of 6 months industrial attachment. This diploma will replace the present Pre-National Diploma (PND), National Diploma (ND) and the Higher National Diploma (HND). The minimum entry requirement is 5 BC GCE 'O' or 1 BC GCE 'A' or equivalent qualifications or pass NSC, and passes the aptitude test and interview. Diploma is equivalent to HND.
3. Degree (Sandwich)
This is a 4-year sandwich course inclusive of 1 year industrial attachment. The minimum entry requirement is 2 BC GCE 'A' or equivalent qualifications in relevant subjects or a pass in the Diploma, and passes the aptitude test and interview.

Progressive Chart for Technical and Vocational Education Three-Tier Qualifications



Comparison Of Technical And Vocational Qualifications Currently and in SPN 21

CURRENT QUALIFICATIONS*	SPN 21 QUALIFICATIONS
National Vocational Certificate (NVC) 1½ years	National Skill Certificate (NSC) - 3 years inclusive of 6 months industrial attachment
National Trade Certificate 3 (NTC3) 1½ years	
National Trade Certificate (NTC2) 1½ years	
Pre National Diploma (PND) 1 year	Diploma - 3 years inclusive of 6 months industrial attachment
National Diploma (ND) 2½ years	
Higher National Diploma (HND) 2½ years	
	Degree (sandwich) - 4 years sandwich, inclusive of 1 year industrial attachment